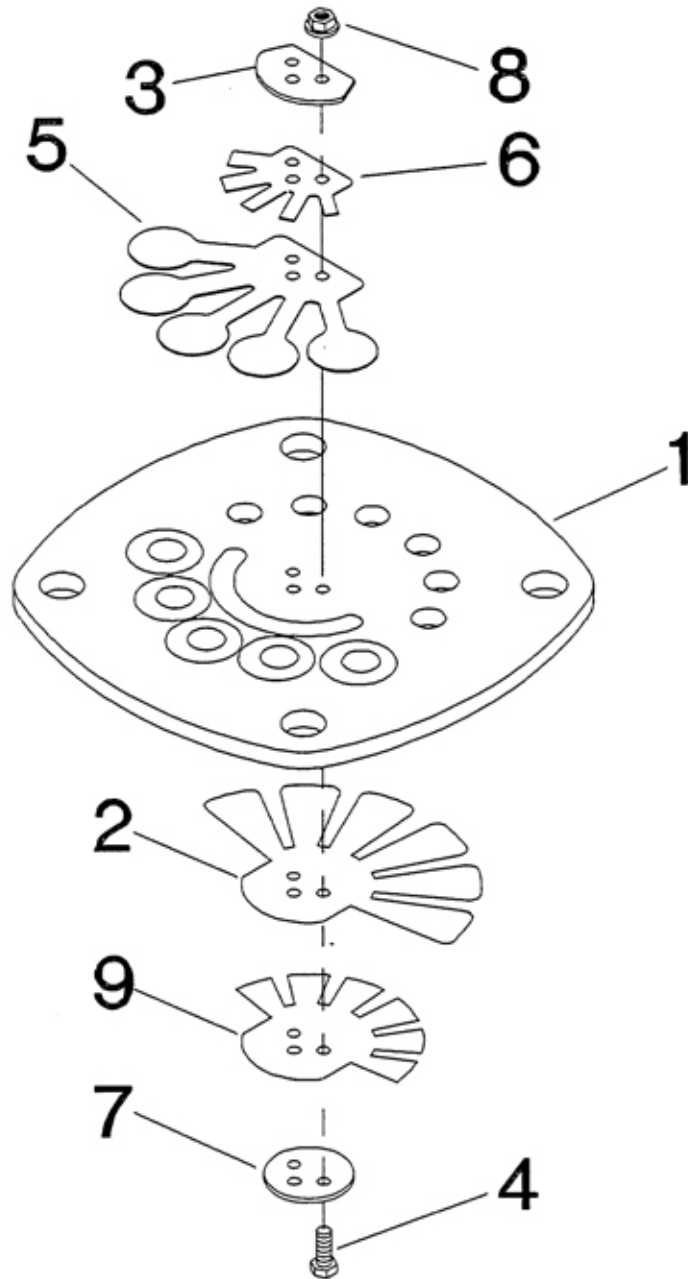


4. HP VALVE PLATE ASSEMBLY - MODEL 2545



All manufacturer's names, numbers, photos, product description and/or part numbers are used for reference purposes only & it is not implied that any part listed is the product of these manufacturers. Since Approvement are made from time to time, the illustration and specifications are subject to change without notice.

4. HP VALVE PLATE ASSEMBLY - MODEL 2545

No.	Description	Ref Part No.	QTY
REF	Assembly, High Pressure (2.75") Valve Plate	32293904	1
4-1	– Plate, High Pressure Valve	32294266	1
4-2	– Valve, High Pressure Intake Finger	32294282	1
4-3	– Retainer, High Pressure Discharge Valve	32294316	1
4-4	– Screw, M3 X 16 Hex Head	97511042	3
4-5	– Valve, High Pressure Discharge	32294290	1
4-6	– Damper, High Pressure Discharge Valve	32294357	1
4-7	– Retainer, High Pressure Intake Valve	32294308	1
4-8	– Nut, M3 Hex with Lockwasher	97511059	3
4-9	– Damper, Valve	32295826	1