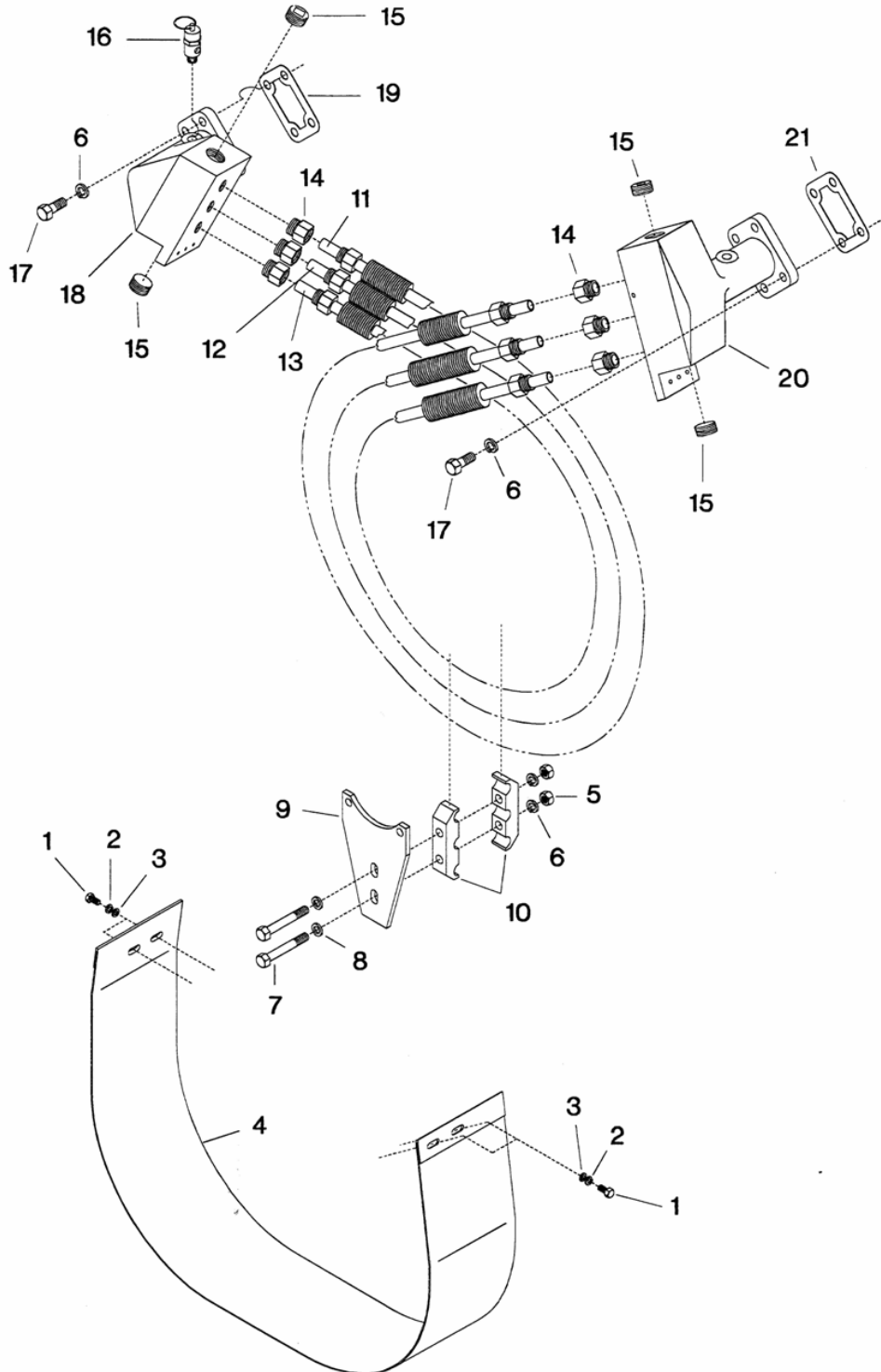


7. INTERCOOLER & SHROUD ASSEMBLY - MODEL 7100



All manufacturer's names, numbers, photos, product description and/or part numbers are used for reference purposes only & it is not implied that any part listed is the product of these manufacturers. Since Approvement are made from time to time, the illustration and specifications are subject to change without notice.

7. INTERCOOLER & SHROUD ASSEMBLY - MODEL 7100

No.	Description	Ref Part No.	QTY
7-1	Capscrew,Hex Head-1/4-20X1/2" (if provided)	95053070	4
7-2	Lockwasher, Spring - 1/4" (If Provided)	95043196	4
7-3	Washer, Flat 1/4" (if provided)	95094298	4
7-4	Shroud, Intercooler (If provided)	32205361	1
7-5	Nut, Hex - 3/8 - 16	95077764	2
7-6	Lockwasher, Spring - 3/8"	95081857	10
7-7	Capscrew, Hex Head-3/8-16X2-1/2"	95079646	2
7-8	Washer, Flat - 3/8"	95069597	2
7-9	Bracket, Intercooler	32175010	1
7-10	Clamp, Intercooler Tube - Outer	32165367	2
7-11	Ass'y, Intercooler Tube - Finned - # 3	32196941	1
7-12	Ass'y, Intercooler Tube - Finned - # 2	32196933	1
7-13	Ass'y, Intercooler Tube - Finned - # 1	32196925	1
7-14	Connector, Male - 5/8 X 1/2"	95083226	6
7-15	Plug, Pipe - Square Countersunk - 1"	95101457	4
7-16	Valve, Relief - 80 PSIG	72062185	2
7-17	Capscrew, Hex Head-3/8-16 X 1"	95079612	8
7-18	Manifold, Intercooler- Low Pressure	32177313	1
7-19	Gasket, Manifold - Low Pressure	32153801	2
7-20	Manifold, Intercooler- High Pressure	32177347	1
7-21	Gasket, Manifold - High Pressure	32153827	1

All manufacturer's names, numbers, photos, product description and/or part numbers are used for reference purposes only & it is not implied that any part listed is the product of these manufacturers. Since Approvement are made from time to time, the illustration and specifications are subject to change without notice.