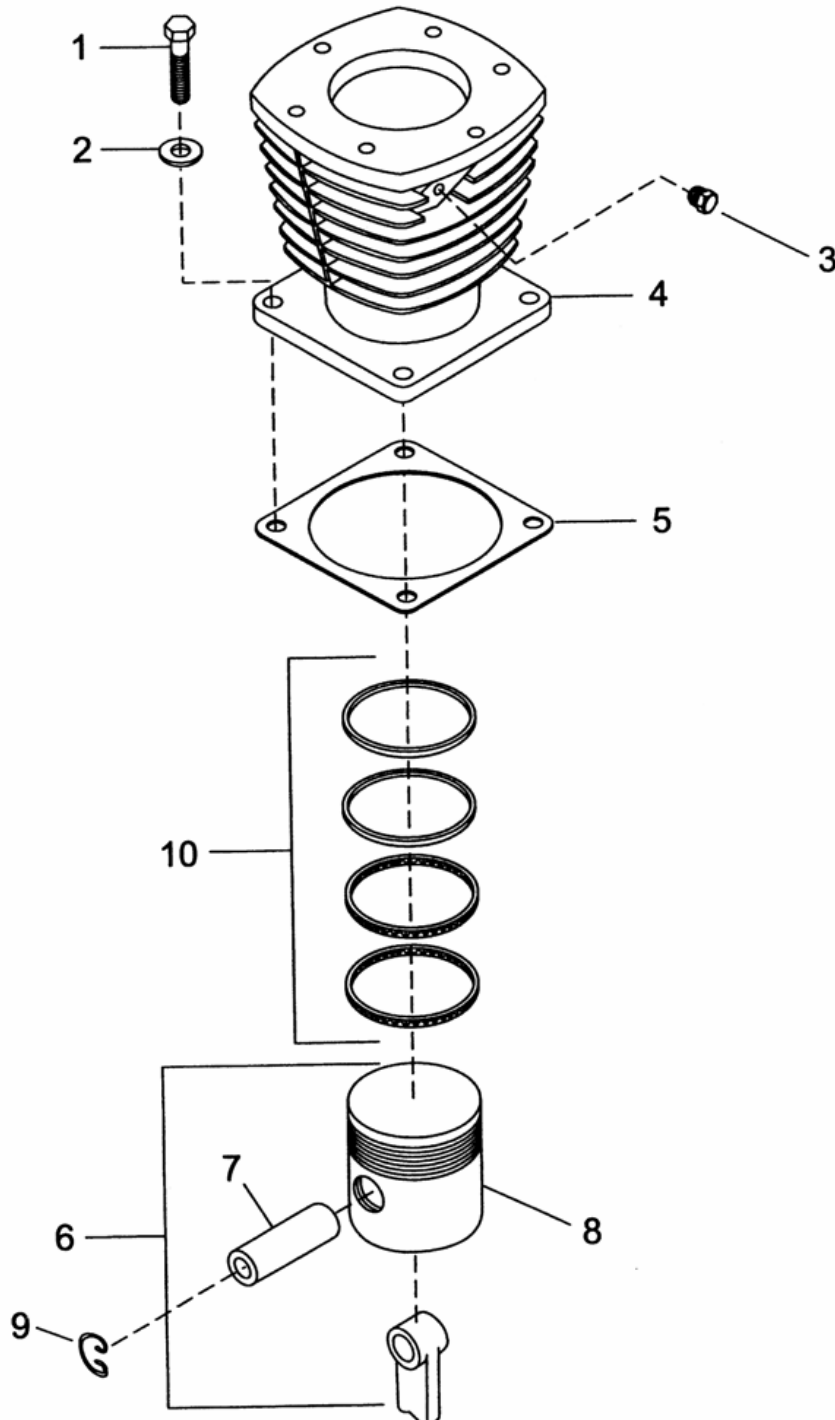


5. SECOND STAGE CYLINDER & PISTON - MODEL 3000



All manufacturer's names, numbers, photos, product description and/or part numbers are used for reference purposes only & it is not implied that any part listed is the product of these manufacturers. Since Approvement are made from time to time, the illustration and specifications are subject to change without notice.

5. SECOND STAGE CYLINDER & PISTON - MODEL 3000

No.	Description	Ref Part No.	QTY
5-1	Capscrew, Hex Head - 1/2-13 X 1-1/4"	95053567	4
5-2	Washer, Copper -1/2"	95674701	4
5-3	Plug, Pipe - Hex Head -1/4"	95252409	1
5-4	Cylinder, Second Stage	32172165	1
5-5	Gasket, Flange	30294235	1
5-6	Assembly, Piston/Pin -4"	32054520	1
5-7	- Pin, Piston	37131695	1
5-8	- Piston - 4"	NSS	1
5-9	Ring, Lock	30288450	2
5-10	Set, Ring - 4"	32194151	1

All manufacturer's names, numbers, photos, product description and/or part numbers are used for reference purposes only & it is not implied that any part listed is the product of these manufacturers. Since improvement are made from time to time, the illustration and specifications are subject to change without notice.