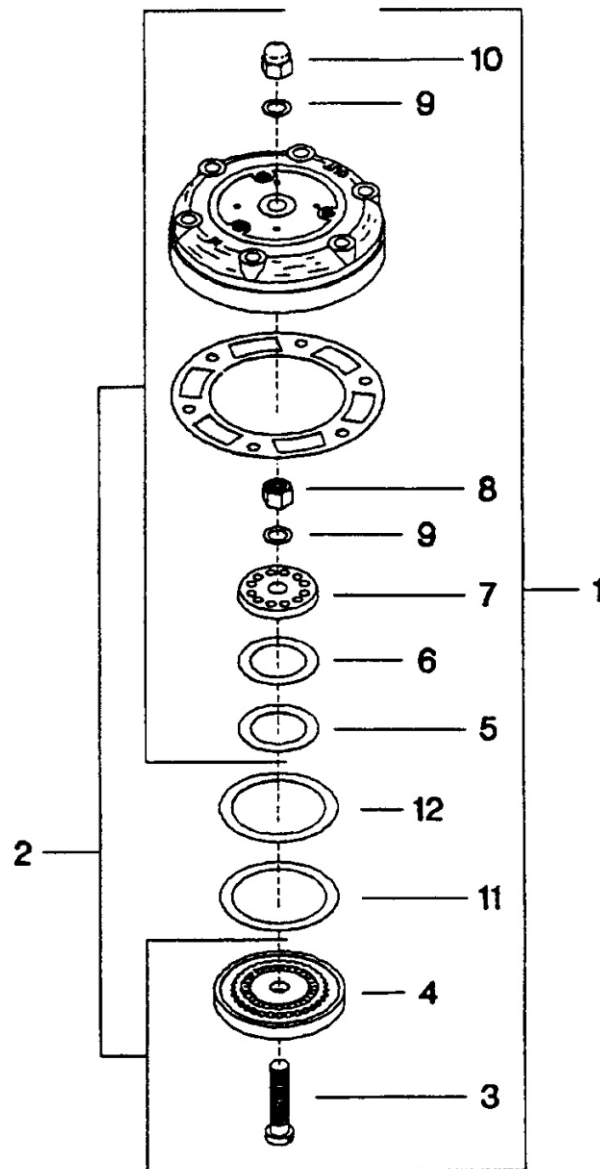


## 7. 35 GA VALVE ASSEMBLY - MODEL 15T2



All manufacturer's names, numbers, photos, product description and/or part numbers are used for reference purposes only & it is not implied that any part listed is the product of these manufacturers. Since Approvement are made from time to time, the illustration and specifications are subject to change without notice.

## 7. 35 GA VALVE ASSEMBLY - MODEL 15T2

No.	Description	Ref Part No.	QTY
8-1	Valve, 35GA - Complete	37004827	1
8-2	– Valve, Assembly	32156713	1
8-3	– – Bolt, Valve	30220925	1
8-4	– – Seat, Valve Discharge	30217608	1
8-5	– – Plate, Valve Discharge	30215941	1
8-6	– – Spring, Valve Discharge	30221576	1
8-7	– – Plate, Stop - Discharge	30218994	1
8-8	– – Nut, Hex 5/6 - 18	95076808	1
8-9	– – Washer, Belleville - 5/8 WE	37092913	2
8-10	– – Nut, Acorn - 5/8 -18	30287643	1
8-11	– Spring, Valve - Inlet	30221501	1
8-12	– Plate, Valve - Inlet	30181499	1