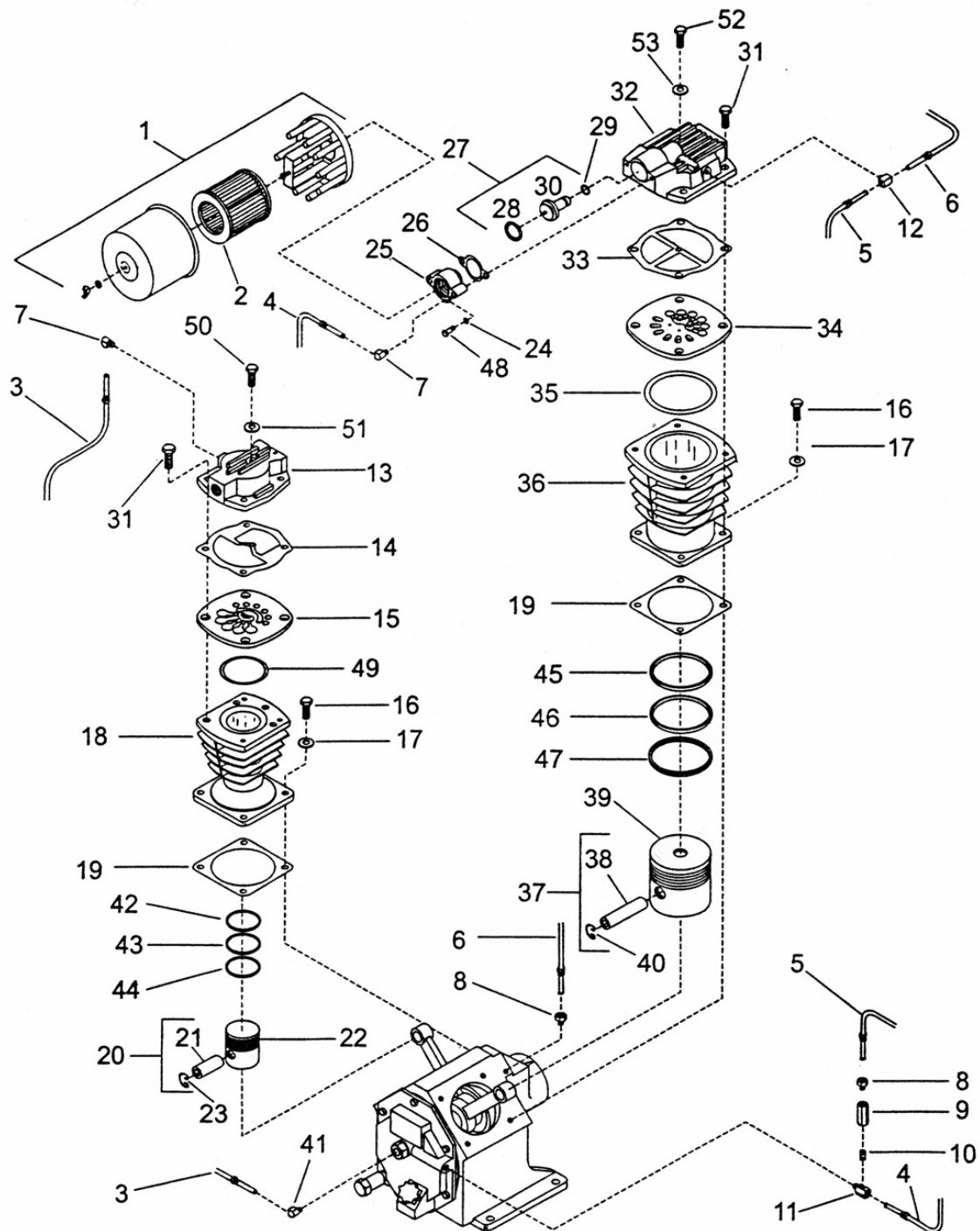


2. COMPRESSOR PUMP ASSEMBLY - MODEL 2545



All manufacturer's names, numbers, photos, product description and/or part numbers are used for reference purposes only & it is not implied that any part listed is the product of these manufacturers. Since Approvement are made from time to time, the illustration and specifications are subject to change without notice.

2. COMPRESSOR PUMP ASSEMBLY - MODEL 2545

No.	Description	Ref Part No.	QTY
2-1	Filter, Air Inlet - Complete	32230542	1
2-2	– Element, Filter - 10 Micron	32012957	1
2-3	Assembly, Tube -Pilot Valve/High Pressure Head	32293953	1
2-4	Assembly, Tube -Frame End Cover Tee/Inlet	32201444	1
2-5	Assembly, Tube -Fec Check Valve/Low Pressure Head	32293961	1
2-6	Assembly, Tube -Breather	32293946	1
2-7	Elbow, Tube - 5/16 X 1/8"	95031860	2
2-8	Connector, Tube - 5/16 X 1/8"	95082483	2
2-9	Valve, Check	32001141	1
2-10	Nipple, Close - 1/8" X 3/4"	95796017	1
2-11	Connector, Male -5/16 X 1/4"	32203242	1
2-12	Tee, Male Branch - 5/16 X 1/8"	95007522	1
2-13	Head, High Pressure	32294084	1
2-14	Gasket, Head - High Pressure	32294043	1
2-15	Assembly, Valve Plate - High Pressure (Fig. 4)	32293904	1
2-16	Capscrew, Hex - 1/2-13 X 1-1/4"	95053567	8
2-17	Gasket, Copper Washer - 1/2"	95674701	8
2-18	Cylinder -2-3/4"- 2nd Stage	32295248	1
2-19	Gasket, Flange	32294019	2
2-20	Complete, Piston/Pin - High Pressure	32496614	1
2-21	– Pin, Piston	32182818	1
2-22	– Piston - 2-3/4"	NSS	1
2-23	– Ring/Lock	30287791	2
2-24	Lockwasher, Spring - 5/16"	95043188	2
2-25	Cover, Unloader	32230633	1
2-26	Gasket, Unloader Cover	32182826	1
2-27	Assembly, Piston Unloader	32256265	1
2-28	– Seal, Unloader Piston	32254740	1
2-29	– O-Ring, Unloader Piston	32188385	1
2-30	– Piston, Unloader	NSS	1
2-31	Capscrew, Hex - 1/2-13 X 1-3/4"	95104188	8
2-32	Head - Low Pressure	32499899	1
2-33	Gasket, Head - Low Pressure	32294050	1
2-34	Assembly, Valve Plate - Low Pressure (Fig.C)	32293912	1
2-35	O-Ring, Valve Plate	32294076	1
2-36	Cylinder -5" - 1st Stage	32295271	1
2-37	Complete, Piston/Pin - Low Pressure	32496580	1
2-38	– Pin, Piston	30297022	1

All manufacturer's names, numbers, photos, product description and/or part numbers are used for reference purposes only & it is not implied that any part listed is the product of these manufacturers. Since Approvement are made from time to time, the illustration and specifications are subject to change without notice.

2. COMPRESSOR PUMP ASSEMBLY - MODEL 2545

No.	Description	Ref Part No.	QTY
2-39	– Piston, Low Pressure (5")	NSS	1
2-40	– Ring, Lock	30287791	2
2-41	Elbow, 5/16 X 1/4" Tube	95110441	1
2-42	Set, High Pressure (2.75") Piston Rings	32294167	1
2-43	Ring, Scraper (2.75")	32294175	1
2-44	Ring, Oil Control (2.75")	32295792	1
2-45	Set, Low Pressure (5") Piston Rings	32294209	1
2-46	Ring, Scraper (5")	32294217	1
2-47	Ring, Oil Control (5")	32295784	1
2-48	Capscrew, 5/16-18 X 1-3/4" Hex Head	95079927	2
2-49	O-Ring, High Pressure Valve Plate	32294068	1
2-50	Capscrew, 1/4-28 X 2-1/4" Hex Head	95318978	1
2-51	Washer, 3/8" Copper	95674677	1
2-52	Capscrew, 3/8-24 X 3-1/2" Hex Head	32294373	1
2-53	Washer, 1/4" Copper	32255903	1

All manufacturer's names, numbers, photos, product description and/or part numbers are used for reference purposes only & it is not implied that any part listed is the product of these manufacturers. Since improvement are made from time to time, the illustration and specifications are subject to change without notice.