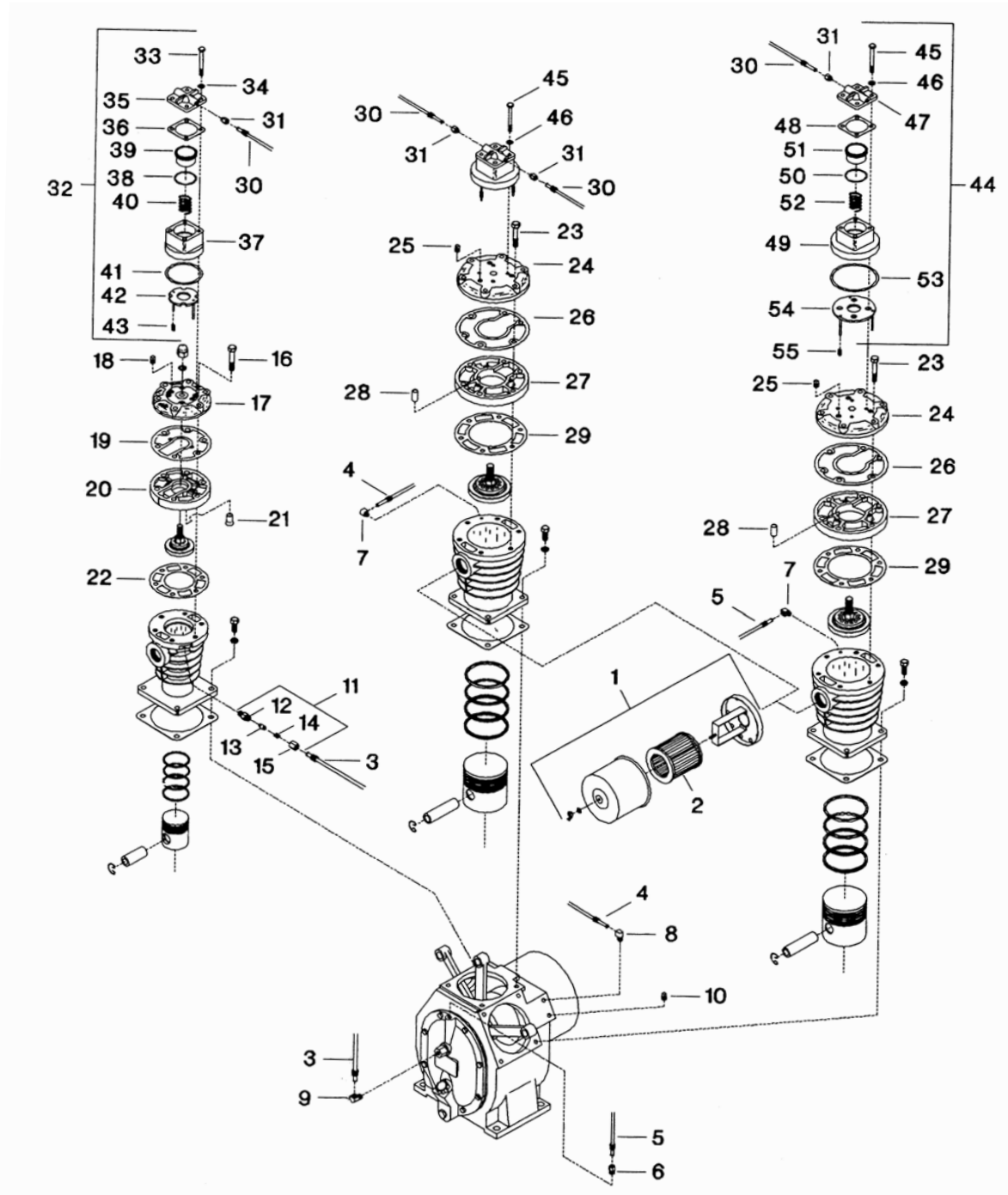


### 3. BARE COMPRESSOR - MODEL 15T



All manufacturer's names, numbers, photos, product description and/or part numbers are used for reference purposes only & it is not implied that any part listed is the product of these manufacturers. Since Approvement are made from time to time, the illustration and specifications are subject to change without notice.

### 3. BARE COMPRESSOR - MODEL 15T

No.	Description	Ref Part No.	QTY
3-1	Filter complete - inlet	32109779	2
3-2	– Element, filter - 10 micron	32012957	1
3-3	Tube Assy, cylinder relief/pilot valve 3/8 dia	37003845	1
3-4	Tube Assy, breather - 1/16 dia	37003829	1
3-5	Tube Assy,frame end cover/L.P.cyl - 5/16 dia	37003837	1
3-6	Connector, Male 5/16 X 1/4	32157554	1
3-7	Elbow tube- 5/16 X 1/8	95031860	2
3-8	Elbow tube- 5/16 X 1/4	95110441	1
3-9	Elbow tube- 3/8 X 1/4	95040143	1
3-10	Plug, Pipe - Hex 1/4	95252409	1
3-11	Assy, cylinder relief valve	30291801	1
3-12	– Body, cylinder relief valve	35154111	1
3-13	– Valve , cylinder relief valve	35154129	1
3-14	– Spring , cylinder relief valve	30672638	1
3-15	– Cap, cylinder relief valve	30279293	1
3-16	Capscrew - Hex 1/2 - 13 X 3	95053054	6
3-17	Airhead, top - high pressure	37130382	1
3-18	– Piug, pipe - Hex head 1/4	32179038	2
3-19	Gasket, airhead - top/bottom - high pressure	37007754	1
3-20	Airhead bottom half - high pressure	37130366	1
3-21	Dowel	37114030	1
3-22	Gasket, airhead - high perssure	30294508	1
3-23	Capscrew - Hex 1/2 - 13 X 3	95053054	6
3-24	Airhead, top - low pressure	37130515	2
3-25	– Piug, pipe - Hex head 1/4	32179038	6
3-26	Gasket, airhead - top/bottom - low perssure	37007747	2
3-27	Airhead, bottom half - low pressure	37130499	2
3-28	Dowel	37114030	2
3-29	Gasket, airhead - low perssure	30294193	2
	Parts Listed Below Used With Optional Constant Speed Control		
3-30	Assy,tube-LP/LP/HP constant speed-5/16 dia	37003852	2
3-31	Connector tube - 5/16 X 1/8	95082483	4
3-32	Unloader - complete - high pressure	30292015	1
3-33	– Capscrew - Hex 3/8 - 16 X 3-1/2	95102042	4
3-34	– Washer, flat - 3/8	30345227	4
3-35	– Cover, unloader	37129905	1
3-36	– Gasket, unloader cover	30294656	1
3-37	– Body, unloader	37129889	1
3-38	– O - ring	32136715	1

All manufacturer's names,numbers,photos,product description and/or part numbers are used for reference purposes only & it is not implied that any part listed is the product of these manufacturers. Since Approvement are made from time to time, the illustration and specifications are subject to change without notice.

### 3. BARE COMPRESSOR - MODEL 15T

No.	Description	Ref Part No.	QTY
3-39	– Piston, unloader	32139883	1
3-40	– Spring, unloader piston	30416853	1
3-41	– Gasket, Unloader body	30294680	1
3-42	– Assy, unloader plate	32016578	1
3-43	– Spring, unloader pin	32012395	2
3-44	Unloader - complete - low pressure	30292007	2
3-45	– Capscrew-Hex 3/8 - 16 X 3-1/2	95102042	4
3-46	– Washer, flat - 3/8	30345227	4
3-47	– Cover, unloader	37129905	1
3-48	– Gasket, unloader cover	30294656	1
3-49	– Body, unloader	37129947	1
3-50	– O - ring	32136715	1
3-51	– Piston, unloader	32139883	1
3-52	– Spring, unloader piston	30416853	1
3-53	– Gasket unloader body	30294698	1
3-54	– Assy, unloader plate	32016537	1
3-55	– Spring, unloader pin	32012395	3