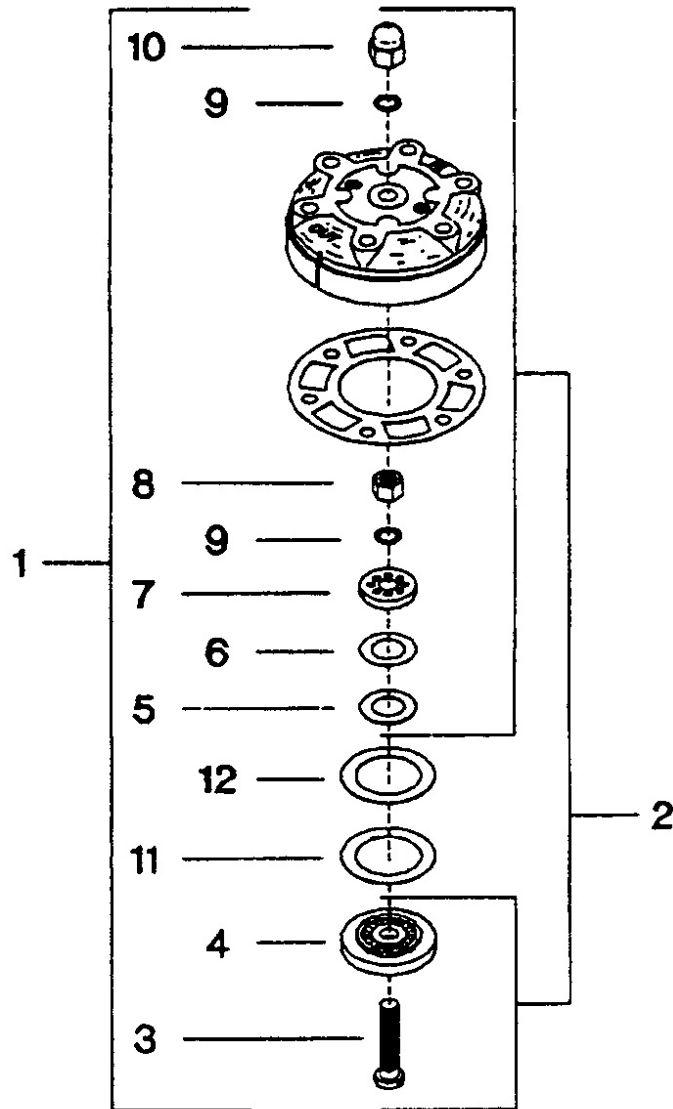


## 8. 55 GA VALVE ASSEMBLY - MODEL 15T2



All manufacturer's names, numbers, photos, product description and/or part numbers are used for reference purposes only & it is not implied that any part listed is the product of these manufacturers. Since Approvement are made from time to time, the illustration and specifications are subject to change without notice.

## 8. 55 GA VALVE ASSEMBLY - MODEL 15T2

No.	Description	Ref Part No.	QTY
9-1	Valve, 55GA - Complete	37101946	1
9-2	– Valve, Assembly	32156747	1
9-3	– – Bolt, Valve	30279897	1
9-4	– – Seat, Valve Discharge	30217673	1
9-5	– – Plate, Valve Discharge	30181499	1
9-6	– – Spring, Valve Discharge	30221501	1
9-7	– – Plate, Stop - Discharge	30218978	1
9-8	– – Nut, Hex 3/4 - 16	95076816	1
9-9	– – Washer, Belleville - 3/4 WE	37092897	2
9-10	– – Nut, Acorn - 3/4 -16	30287650	1
9-11	– Spring, Valve - Inlet	30221550	1
9-12	– Plate, Valve - Inlet	30215891	1