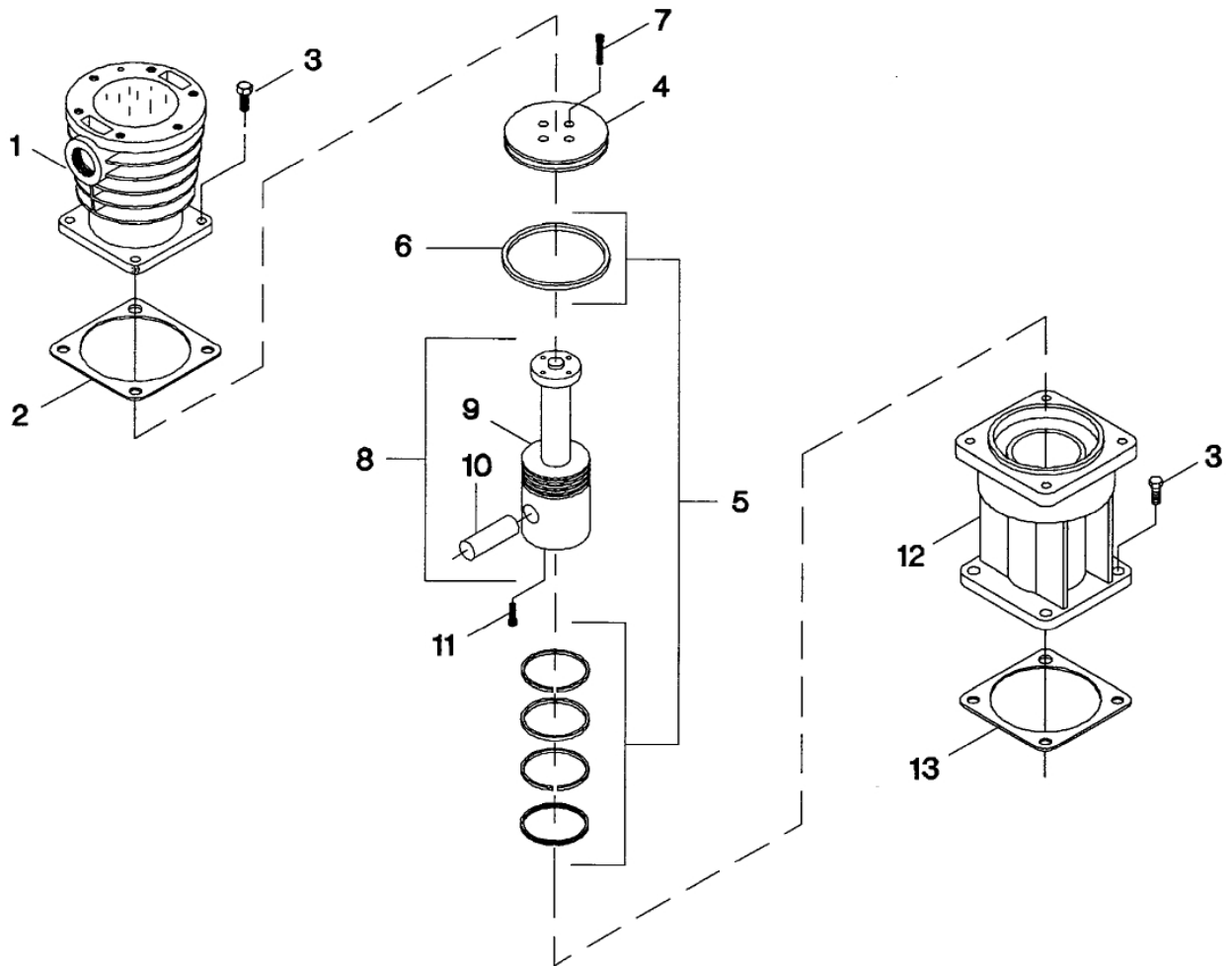


6. 5" PISTON, CYLINDER & CROSSHEAD - MODEL 10T3NLM



All manufacturer's names, numbers, photos, product description and/or part numbers are used for reference purposes only & it is not implied that any part listed is the product of these manufacturers. Since Approvement are made from time to time, the illustration and specifications are subject to change without notice.

6. 5" PISTON, CYLINDER & CROSSHEAD - MODEL 10T3NLM

No.	Description	Ref Part No.	QTY
6-1	Cylinder, Air - 5" - High Pressure	32222416	2
6-2	Gasket, Flange	37135985	2
6-3	Capscrew - M12 X 30	32225195	16
6-4	Top, Piston	37140043	2
6-5	Set, Ring	32015109	2
6-6	– Ring, Piston - Step Seal	37197993	1
6-7	Screw, Socket Head - M6 X 15	32225153	8
6-8	Assembly, Crosshead/Pin	32222796	2
6-9	– Crosshead	NSS	1
6-10	– Pin, Crosshead	37170271	1
6-11	Setscrew - M10 X 25	32225211	2
6-12	Guide, Crosshead	32222325	2
6-13	Gasket, Flange	30294201	2

All manufacturer's names, numbers, photos, product description and/or part numbers are used for reference purposes only & it is not implied that any part listed is the product of these manufacturers. Since improvement are made from time to time, the illustration and specifications are subject to change without notice.