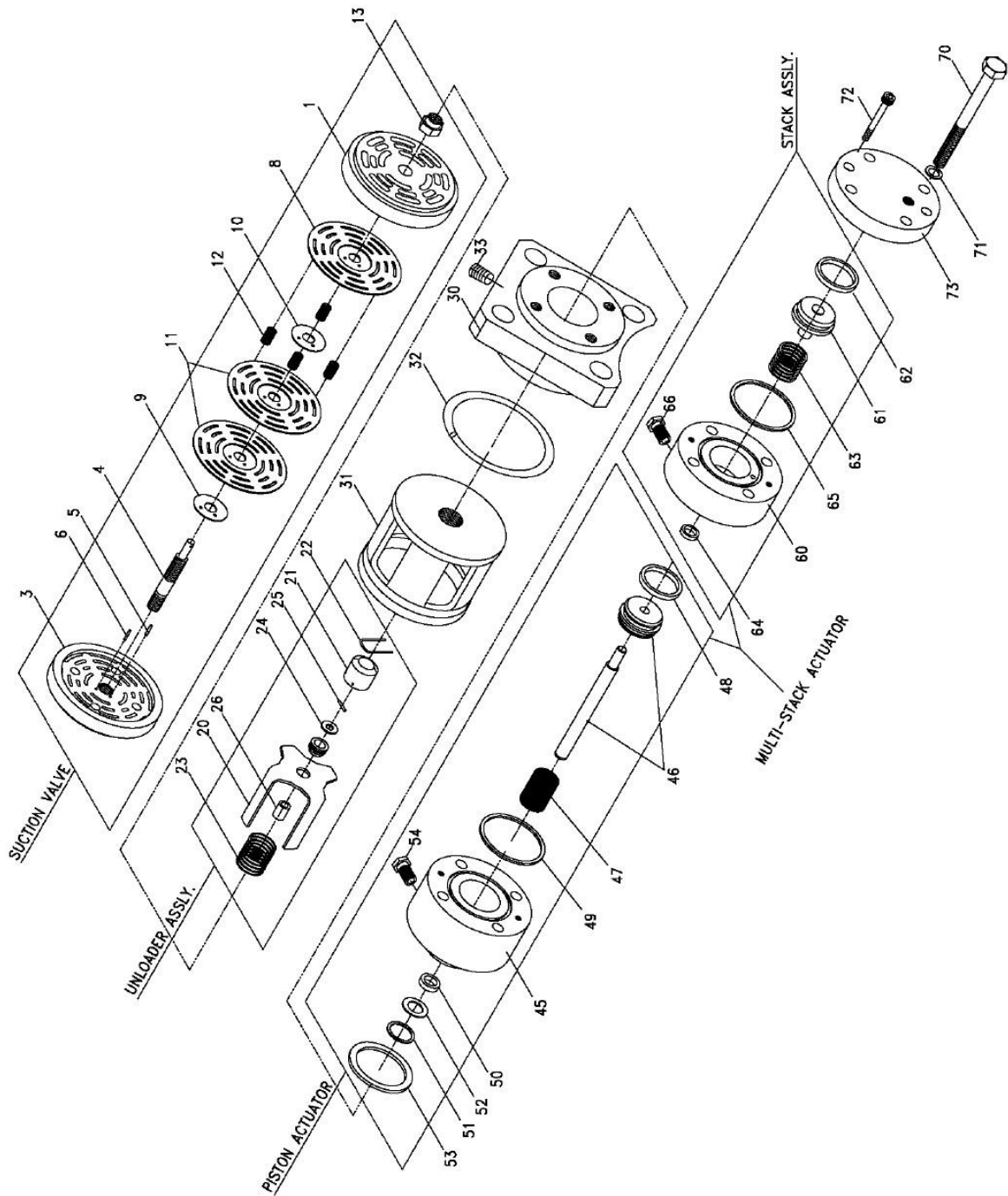


4 - VALVE INLET COMPLETE WITH UNLOADER- MODEL – 5&4x7PHE7 NL



4 - VALVE INLET COMPLETE WITH UNLOADER- MODEL – 5&4x7PHE7 NL

Sr.No	Description	Ref Part Nos	Qty
–	. VALVE INLET W/UNL W/ACTUATOR	39590468	2
–	. . VALVE SUCTION W/UNLOADER	37982873	1
–	. . . VALVE SUCTION	37982907	1
4-1 SEAT SUCTION	37980414	1
4-2 ASSEMBLY SUCTION GUARD	37980422	1
4-3 GUARD SUCTION	37980430	1
4-4 BOLT CENTER	37980448	1
4-5 PIN LOCATING	34032805	1
4-6 PIN LOCATING	34032813	1
– BOLT LOCK	33019225	1
4-8 PLATE VALVE	37944550	1
4-9 WASHER LIFT	37944568	1
4-10 WASHER LIFT	37944568	1
4-11 PLATE DAMPING	34004960	2
4-12 SPRING CLOSING	33426883	4
4-13 NUT LOCK	33013889	1
–	. . . ASSEMBLY UNLOADER	37980406	1
4-20 UNLOADER	37980455	1
4-21 COVER UNLOADER	37949997	1
4-22 WIRE LOCKING	37949963	1
4-23 SPRING UNLOADER	34034033	1
4-24 RING STOP	37949989	1
4-25 PIN UNLOADER	37949971	1
4-26 BUSHING GUIDE	37950003	1
4-30	. . COVER	37981917	1
4-31	. . CAGE	37982899	1
4-32	. . RING CRUSH	37981933	1
4-33	. . PLUG DRAIN	37984820	1
–	. . ACTUATOR MULTI STACK	37982881	1
–	. . . PISTON ACTUATOR	37982915	1
4-45 HOUSING	37982147	1
4-46 ASSEMBLY PISTON	37982923	1
4-47 SPRING	37980554	1
4-48 SEAL	37982105	2
4-49 O-RING	37982139	1
4-50 SEAL	37980588	1
4-51 WASHER	37980596	1
4-52 RING RETAINING	37980604	1
4-53 GASKET	37980612	1
4-54 FILTER BREATHER	37980620	1
–	. . . ASSEMBLY STACK	37982048	1
4-60 HOUSING	37982089	1
4-61 PISTON	37982097	1
4-62 SEAL	37982105	1
4-63 SPRING	37982113	1
4-64 O-RING	37982121	1
4-65 O-RING	37982139	1

**4 - VALVE INLET COMPLETE WITH UNLOADER-
MODEL – 5&4x7PHE7 NL**

4-66 FILTER BREATHER	37980620	1
4-70	. . . SCREW CAP HEX	37982535	4
4-71	. . . WASHER SERRATED	37980497	4
4-72	. . . SCREW CAP SOCKET HEAD	37982543	2
4-73	. . . COVER	37982071	1

All manufacturer's names,numbers,photos,product description and/or part numbers are used for reference purposes only & it is not implied that any part listed is the product of these manufacturers. Since Approvement are made from time to time, the illustration and specifications are subject to change without notice.